

PROVIDENCE, R. I.
CITY ENGINEER'S OFFICE
STREET LINE DEPT.

May 26, 1888
013880

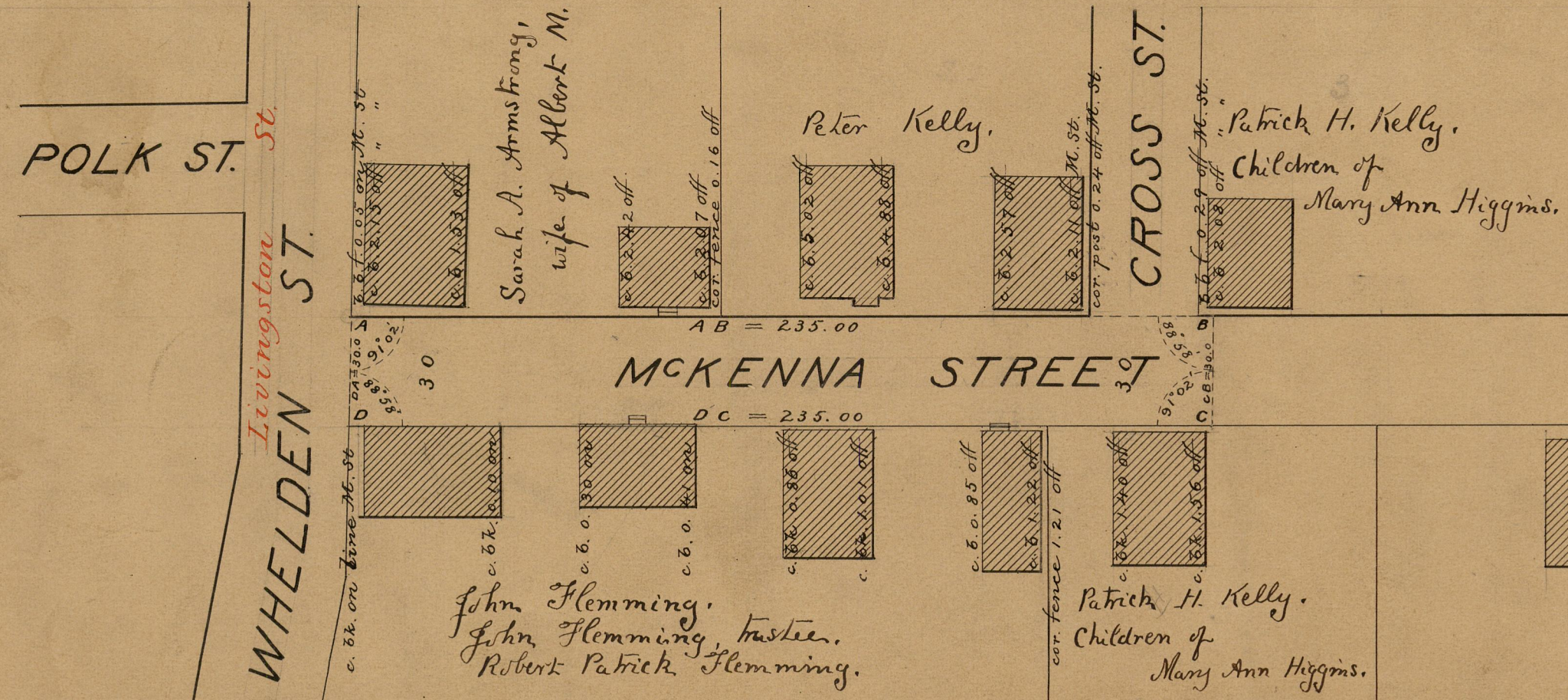
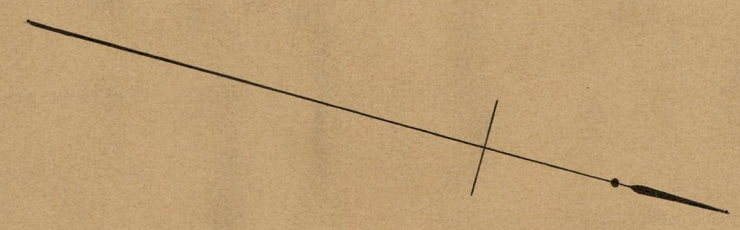
Providence R. I.
This plat accompanies
our report of this date.

PLAT OF MCKENNA STREET

FROM WHELDEN ST. TO
A POINT 235 FEET NORTHERLY.

SCALE 40 FEET PER INCH.

Changed to Corliss St. Dec. 30, 1897.



83
A-83

| | |
|------------|------|
| OFFICE No. | 9653 |
| DRAWER | 83 |
| SHEET | A 83 |